



REVERSO-MANUFACTURING INC.

MANUFACTURERS OF

FIREPLACE EQUIPMENT AND ACCESSORIES

790 Rowntree Dairy Road, Woodbridge, Ontario, Canada L4L 5V3

Tel: (905) 851-6701

Fax: (905) 851-8376

Email: reverso@rogers.com Website: www.reversomfg.com



These appliances have been tested and found to comply with the established standards for GAS-FIRED ROOM HEATERS and DIRECT VENT WALL FURNACES in CANADA and the U. S. A. as follows: CANI-2.17-M91 (R1999) ANSI-Z21.86-2004 CSA 2.32-2004

INSTALLATION AND OPERATING INSTRUCTIONS

DIRECT VENT SPACE HEATER MODELS

Model No.'s: DVH150 N (Natural Gas)
DVH150 P (Propane Gas)

For Your Safety

If you smell gas:

1. Open windows.
2. Don't touch electrical switches.
3. Extinguish any open flame.
4. Immediately call your gas supplier.

For Your Safety

Do not store or use gasoline or other flammable vapors and liquids in the vicinity of this or any other appliance.

WARNING: Improper installation, adjustment, alteration, service or maintenance can cause injury or property damage. Refer to this manual. For assistance or for additional information, consult a qualified installer, service agency or gas utility.

PLEASE KEEP THESE OPERATING INSTRUCTIONS FOR FUTURE REFERENCE

Rev. September 2005

IMPORTANT: SAVE THESE INSTRUCTIONS

TO THE NEW OWNER:

We would like to take this opportunity to assure you that you have chosen a top quality product, which will provide you with many years of trouble free operation, and high efficiency heating performance.

At REVERSO we have continued to deliver on our commitment to uncompromising quality and time proven reliability. We stand proudly behind our entire line of gas appliances.

Our many years of experience in the manufacture of high quality wood stoves have been carried over to our gas-fired products.

The REVERSO "SUPREME", DVH-150 series of products incorporate heavy gauge fireboxes, state of the art safety controls, leak proof construction, and a high efficiency heat exchangers, all in an aesthetically pleasing finished package. When installed and setup correctly this appliance will provide continuous, automatic, high efficiency heat to the room it is installed.

All REVERSO "SUPREME" models have been tested by Warnock Hersey to the national standards of the Canadian and American Gas Associations for both safety and efficiency.

Please take a moment now to acquaint yourself with these instructions and the many features of your new REVERSO "SUPREME" space heater.

GENERAL INFORMATION

All REVERSO gas-fired appliances must be installed in accordance with these instructions. Carefully read 'all of the instructions in this manual first. Consult the building authority having jurisdiction to determine the need for a permit prior to commencing the installation.

NOTE: Failure to follow these instructions could cause a malfunction of the heater which could result in death, serious bodily injury, and/or property damage. Failure to follow these instructions may also void your fire insurance and/or warranty.

FOR YOUR SAFETY

Follow these instructions, local codes and information in CAN/CGA B149 (.1 or .2) Installation Codes For Gas Burning Appliances and Equipment (in Canada) or (in the U.S.A.) follow local codes and/or the most current edition of the National Fuel Gas Code ANSI Z223.1.2

FOR SAFE INSTALLATION AND OPERATION OF YOUR REVERSO "SUPREME" SPACE HEATER, PLEASE, CAREFULLY READ THE FOLLOWING INFORMATION:

PREPARATION FOR INSTALLATION

Remove the packaging from the appliance, and check to make sure there is no damage. In the

event damage is found, please report it to both the carrier and your dealer as soon as possible.

INSTALLATION INSTRUCTIONS

GENERAL

This appliance should be inspected at least annually by a professional service person. It is important that control compartments, burners, circulating air passages and components be kept clean and free from excessive lint from carpeting. Make sure the pilot is turned off before attempting to service this appliance.

It is a good practice to have all of your gas appliances inspected annually.

Due to high temperatures the appliance should be located out of high traffic areas and away from furniture and draperies.

Children and adults should be alerted to hazards of high surface temperatures and should stay away to avoid burns or clothing ignition.

Young children should be carefully supervised when they are in the same room as the appliance.

Clothing or other flammable material should not be placed on or near the appliance.

Always connect this gas appliance to specified vent materials and vent flue gases to the outside of the building envelope. Never vent to another room or inside a building.

Make sure that the vent is properly sized and follows the instructions for minimum/maximum vent provide the proper draft.

Inspect the venting system annually for blockage and any signs of deterioration.

To prevent injury do not allow anyone who is unfamiliar with the operation to use the heater.

A faint odour and slight smoking will likely be noticed when the heater is first used. Open a window until the slight smoking stops.

Any doors or components removed for servicing must be replaced prior to operating the appliance.

Thoroughly clean the location that has been chosen for installation of the REVERSO "SUPREME" space heater.

Ensure, that it is level before connecting the gas and the vent system.

Take a minute to plan out the best routes for the gas lines and the venting system.

Move the appliance into the exact location where it going to be installed.

Under no circumstances should this appliance be modified. Parts that have to be removed for

servicing must be replaced prior to operating this appliance. Only parts supplied by REVERSO "SUPREME" should be used in this appliance.

Never use solid fuels such as wood, paper, cardboard, coal, etc., in this appliance.

Always keep the area around these appliances clear of combustible materials, gasoline or other flammable vapors and liquids. These appliances should not be used as a drying rack for clothing or for hanging Christmas stockings or decorations.

SPECIFICATIONS: FOR REVERSO "SUPREME" PRODUCTS

MODEL NO:
DIRECT VENT FREESTANDING SPACE HEATER (CAN/USA) DVH-150 N
DVH-150 P

(ALL MODELS ARE SUITABLE FOR INSTALLATION IN BEDROOMS)

SPECIFICATIONS

The above models have all been certified for use with either Natural or Propane gases, designated in the model number by the suffix N (Natural gas) or P (Propane).

FOR INSTALLATIONS ABOVE SEA LEVEL

NATURAL GAS MODELS:

In Canada, and the U.S.A. these appliances are certified for installation at altitudes of 0 - 4,500'. In the U.S.A., the appliance must be derated 4% for every 1,000' above 4,500' elevations

PROPANE MODELS:

In Canada, these appliances are certified for altitudes of 0 - 2,000' and must be derated by 10% for installation at elevations between 2,000 and 4,500'. In the U.S.A., the appliance must be derated 4% for every 1,000' above 2,000' elevations.

All models are equipped with a variable input gas control.

ORIFICES AND GAS PRESSURES			PROPANE HIGH ALTITUDE
ORIFICE SIZES:	Natural	Propane	3/64"
MAIN BURNER:	#46DMS	#55DMS	
MIN. RATE SCREW:	#182	#230	
Manifold Press:("W.C.)	3.5"	10.0"	
Min. Manifold Press:	1.8"	7.8"	
Max. Supply Press:	7.0"	13.0"	
Min. Supply Press:	4.5"	10.5"	
Max. BTUH Input:	17,500	17,500	14,500

CLEARANCES TO COMBUSTIBLES:	Sides:	4"
	Rear:	1"
	Top:	12 "
	Floor:	0"
CLEARANCES TO THE FRONT FOR SERVICE:		24"

CORNER INSTALLATIONS - CLEARANCES TO COMBUSTIBLES: AS ABOVE WITH 1" CLEARANCE TO CORNER OF THE APPLIANCE

ELECTRICAL REQUIREMENTS

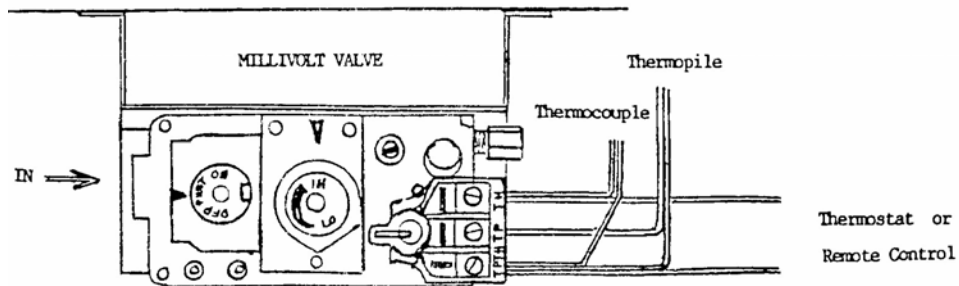
No external electrical power supply is required to operate the REVERSO "SUPREME" DVH 150 series if these models have a Millivolt gas control which uses the pilot flame to generate sufficient power to operate the main burner whenever the manual switch provided is turned on. (See Wiring Diagram Below).

The appliance does come fully equipped with a 120 volt household plug which when connected supplies electrical power for the air circulation fan.

When connected with 115 Volts the appliance must be grounded in accordance with local codes, with the current version of CSA C22.1 (in Canada) or the National Electrical Code ANSI/NFPA 70.

Circulation fan: 120V/60hz - Variable speed fan.

NOTE: Operation of the fan increases the efficiency and the heat output of the appliance.

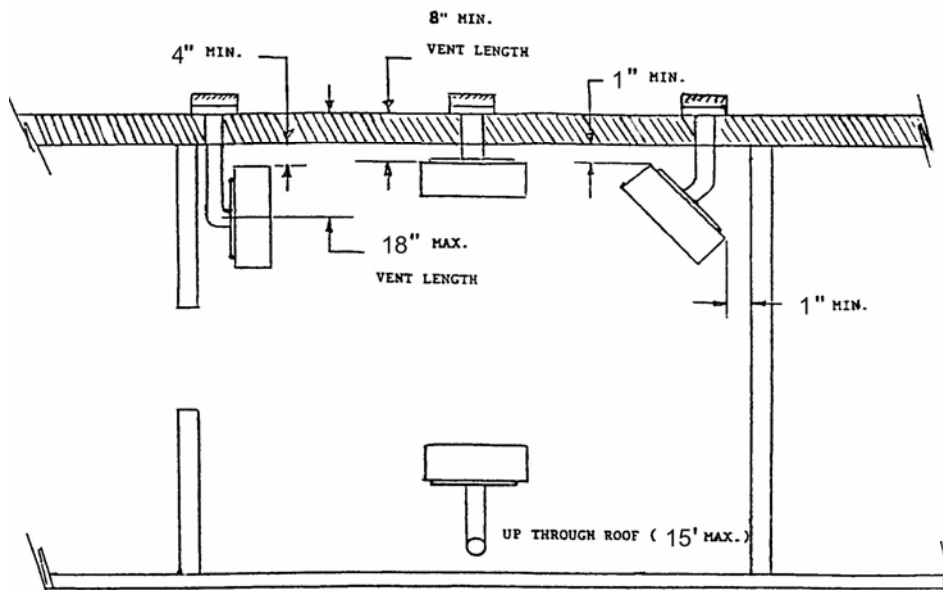


LOCATIONS

As the unit is a direct vent system which draws air for combustion from outside of the building they are approved for bedroom installations.

They may be installed on any flat, hard surface combustible or otherwise. They can be located within the allowable clearances to combustibles against the wall, in a corner or out in the center of the room if desired. (See diagram #1)

LOCATIONS DIAGRAM #1

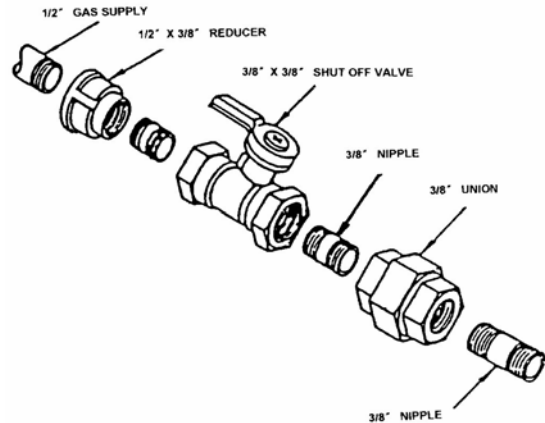


GAS LINE CONNECTION

WARNING: Only persons licensed to work with gas piping may make the necessary gas connections to this appliance.

The appliance is provided with an opening on both sides of the control compartment. A 3/8" gas supply pipe must be brought near this inlet hole, from either the left or right hand side. It is recommended that a union be provided inside or close to the control compartment to facilitate easier servicing.

NOTE: The gas line connection may be made using 3/8" copper tubing or an approved flex connector. Since some municipalities have additional local codes it is always best to consult your local authorities and the CAN/CGA-B149 (1 or 2) Installation Code. For U.S.A. gas installations follow either local codes or the current edition of the National Fuel Gas Code ANZI.Z223.1.



GAS PIPE TESTING

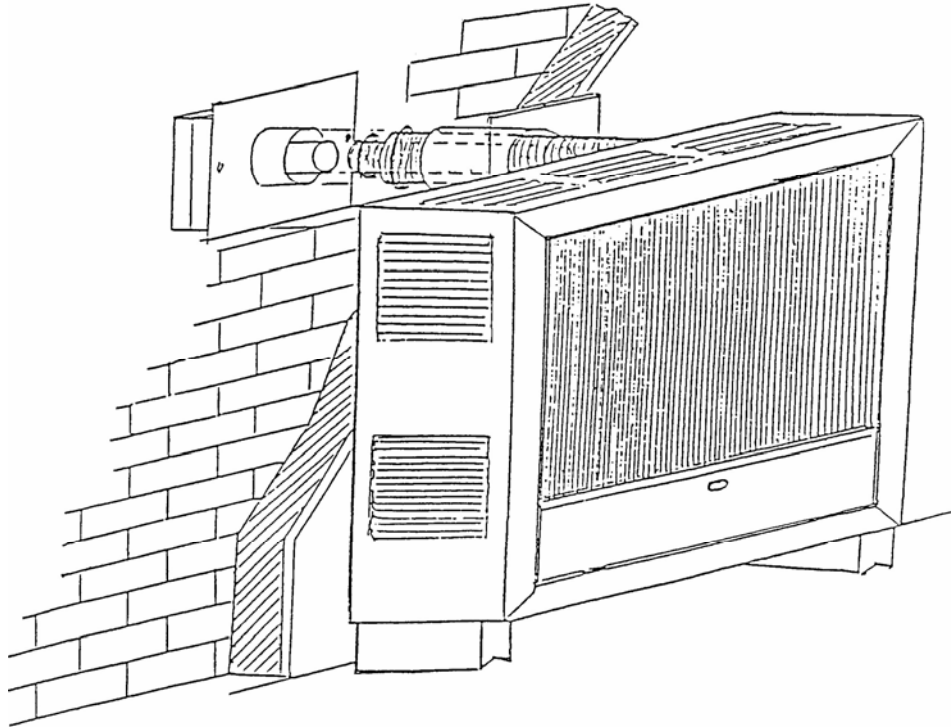
The appliance and its shut-off valves must be disconnected from the gas supply piping system during any pressure testing where the pressure exceeds 1/2 PSIG (3.45 kpa). Always check for gas leaks with a soap and water solution, after completing the required pressure test.

NEVER USE AN OPEN FLAME FOR LEAK TESTING.

When using copper or flex connectors use only fittings approved for gas, connections.

VENTING (COAXIAL 5" AIR INTAKE & 3" AIR EXHAUST)

THIS APPLIANCE MUST NOT BE CONNECTED TO A CHIMNEY FLUE SERVING A SEPARATE SOLID FUEL BURNING APPLIANCE. THIS GAS APPLIANCE MUST HAVE ITS OWN VENT. DOT NOT LINK IT IN ANY WAY WITH ANY OTHER FUEL BURNING APPLIANCE.



Direct Vent Type products may be vented through the sidewall of the dwelling or vertically through the roof. This type of appliance draws all of its air for combustion from outside of the dwelling through specially designed vent pipe.

Kits are available for venting either through the sidewall or vertically through the roof.

SIDEWALL VENTING (HORIZONTAL VENTING APPLICATIONS)

THIS APPLIANCE MUST BE INSTALLED WITH A MINIMUM HORIZONTAL LENGTH OF 8" AND A MAXIMUM LENGTH OF 18" TO THE OUTSIDE WALL TERMINAL. (PLEASE SEE DIAGRAM ON PAGE 8)

WITH A MINIMUM VERTICAL RISE OF 1' HORIZONTAL RUNS OF FROM ONE TO THREE FEET ARE PERMITTED TO REACH THE OUTSIDE VENT TERMINATION. FOLLOW THE VENTING TABLE FOR OTHER CONFIGURATION. BY FOLLOWING THIS TABLE PRECISELY BEFORE BEGINNING THE INSTALLATION YOU CAN ENSURE AN APPROPRIATE OUTSIDE LOCATION FOR THE VENT TERMINATION CAN BE ACCOMMODATED. (PLEASE SEE DIAGRAM ON PAGE 10)

VERTICAL VENTING IS LIMITED TO 15' THROUGH THE ROOF.

ALSO TAKE CARE TO REVIEW THE DIAGRAM ON THE FOLLOWING PAGE WHICH OUTLINES LOCATION LIMITATIONS GOVERNED BY NATIONAL CODE.

ROUTINE MAINTENANCE

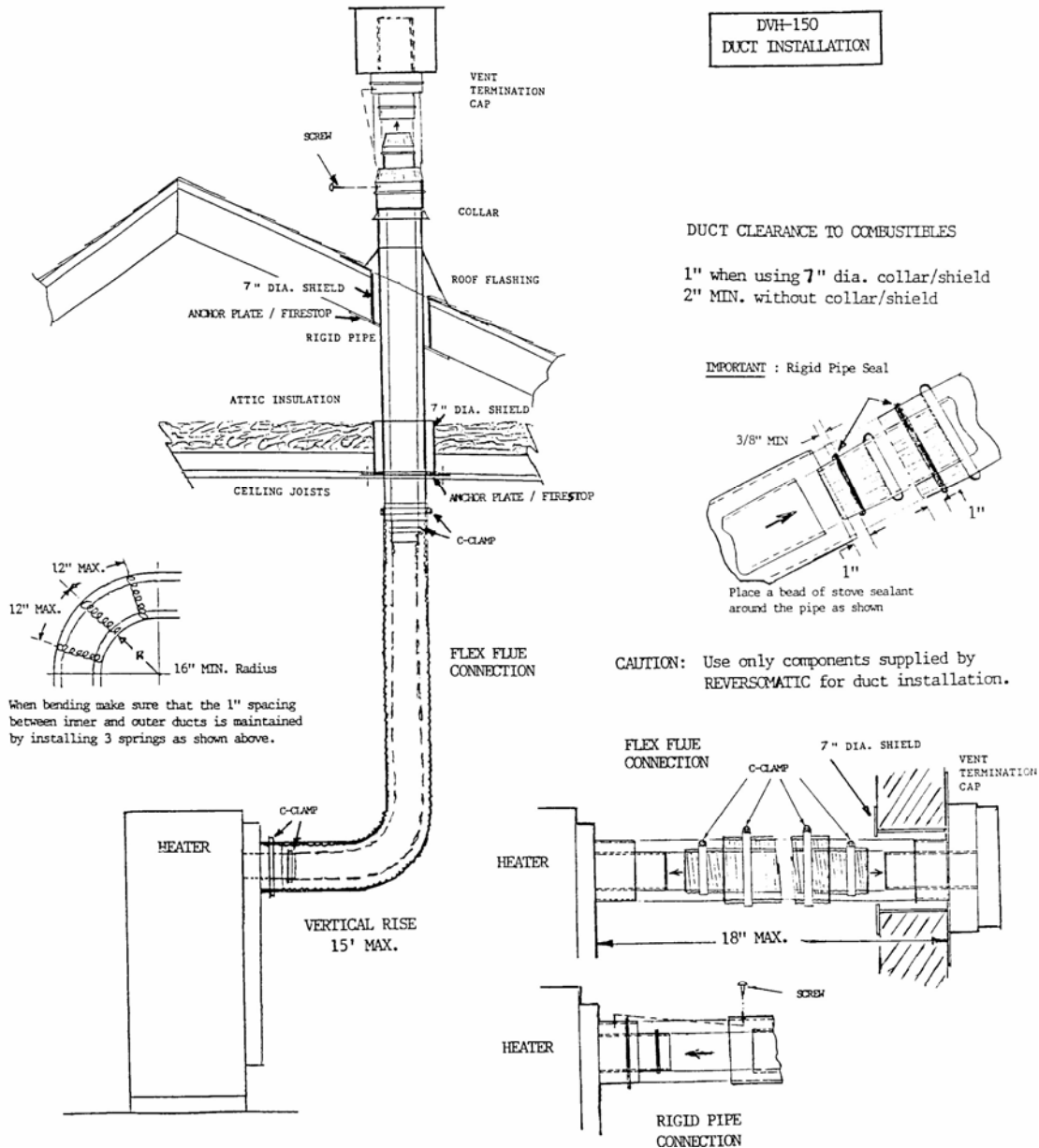
WARNING:

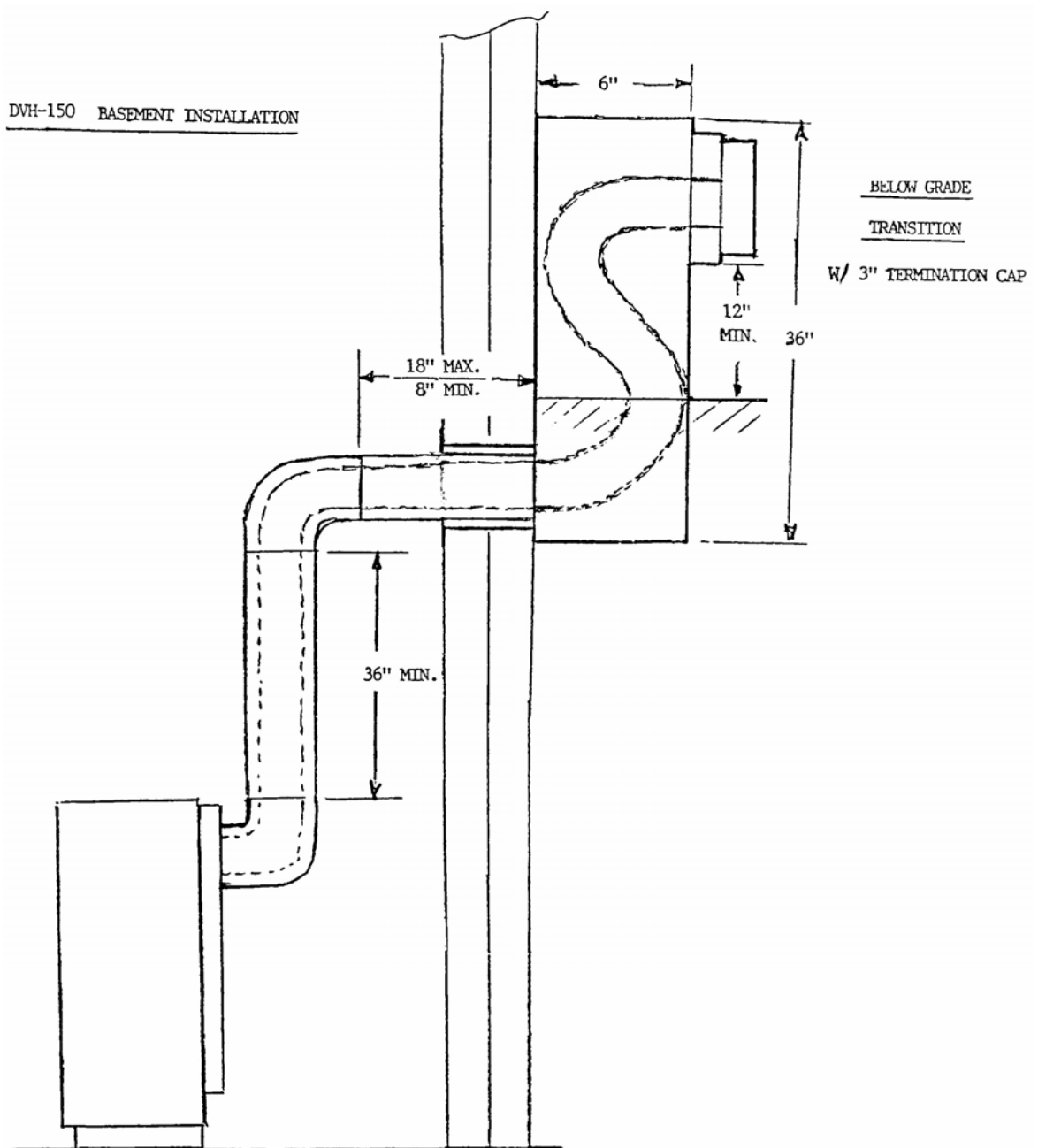
Improper installation, adjustment, alteration, servicing or maintenance can result in personal injury and property damage. Always refer to this manual for normal maintenance requirements. For further assistance or additional information consult a qualified gas installer, your REVERSO "SUPREME" gas dealer or your local gas supplier.

This appliance must not be operated if it or the gas controls have been under water. Contact a qualified gas technician for service before attempting to operate.

This appliance should be serviced regularly, to ensure continuing safety and efficiency contact a qualified technician at least annually.

For cleaning turn the gas control knob to the "OFF" position. This will extinguish the pilot flame. Wait at least, five (5) minutes before cleaning.

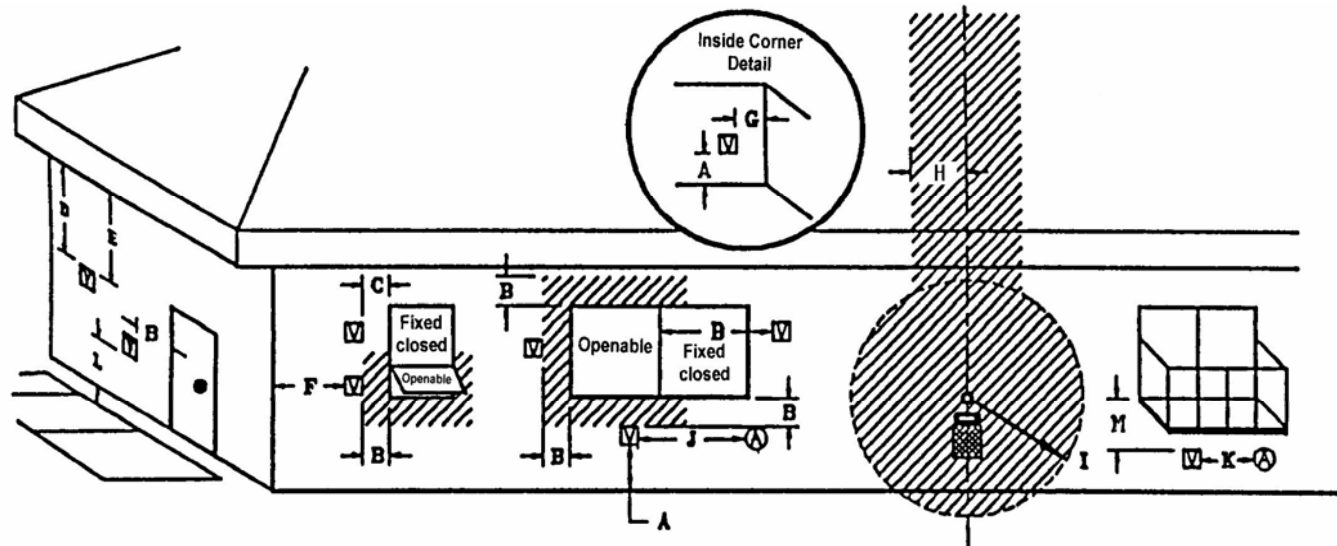




Location of Horizontal Termination

The following diagram outlines restrictions on vent terminal location. These minimum clearances must be observed.

Horizontal terminal must not be blocked by shrubs, tree, utility sheds or any other obstructions. Terminal should have at least 18" clearance from any such obstacles. Take care to locate terminal away from areas of snow or ice accumulation.



☐ = Vent terminal

Ⓐ = Air supply inlet

/// = Area where terminal is not permitted

A = Clearance above grade, veranda, porch, deck, or balcony
[*12 inches (30mm) minimum]

B = Clearance to window or door that may be opened
[*12 Inches (30 cm) minimum to top and sides and
24 inches below]

C = Clearance to permanently closed window [minimum 12 Inches (30 cm)
recommended to prevent condensation on window]

D = Vertical clearance to ventilated soffit located above the terminal within a
horizontal distance of 2 feet (60 cm) from the centre -line of the
Terminal [18 Inches (46 cm) minimum]

E = Clearance to unventilated soffit [12 Inches (30 cm) minimum]

F = Clearance to outside corner [6 Inches minimum]

** A vent shall not terminate directly above a side-walk or paved driveway which is located between two single family dwellings and serves both dwellings.

* Only permitted if veranda, porch, deck, or balcony is fully open on a minimum of 2 sides beneath the floor.

G = Clearance to inside corner [6 inches minimum]

H = Not to be Installed above a meter/regulator assembly within 3 feet (90
cm) horizontally from the centre line of the regulator

I = Clearance to service regulator vent outlet [8 feet (2.4 m) Minimum]

J = Clearance to non-mechanical air supply inlet to building or the
combustion air inlet to any other appliance [12 Inches (30 cm)
minimum]

K = Clearance to a mechanical air supply Inlet [6 feet (1.8 m) minimum]

L = ** Clearance above paved side-walk or paved driveway located on
public property [7 feet (2.1 m) minimum]

M = * Clearance under veranda, porch, deck, or balcony [*18 Inches (45cm)
minimum]

OPENING THE FRONT DOOR

(Before Starting: if necessary wait until the appliance has cooled down.

1. Lift off the perforated screen on the front of the appliance. This will expose the combustion chamber door and the screws that fasten it in place.
2. A light spray of WD 40 or equivalent lubrication is recommended before removing the retaining screws, to prevent seized screws from stripping. Carefully remove the screws, and save them for replacement after servicing is complete.
3. There should be little need to disturb the baffles or burner assembly during this servicing.
4. Vacuum any carbon build up around the air intake and burner assembly.
5. Ensure the door is properly fastened and all of the door retaining screws are back in place after cleaning before attempting to relight the appliance.

NOTE: This appliance is equipped with Neo Ceram Glass pilot viewing port which can only be broken by a significant impact or misuse.

REVERSO "SUPREME" OPTIONS

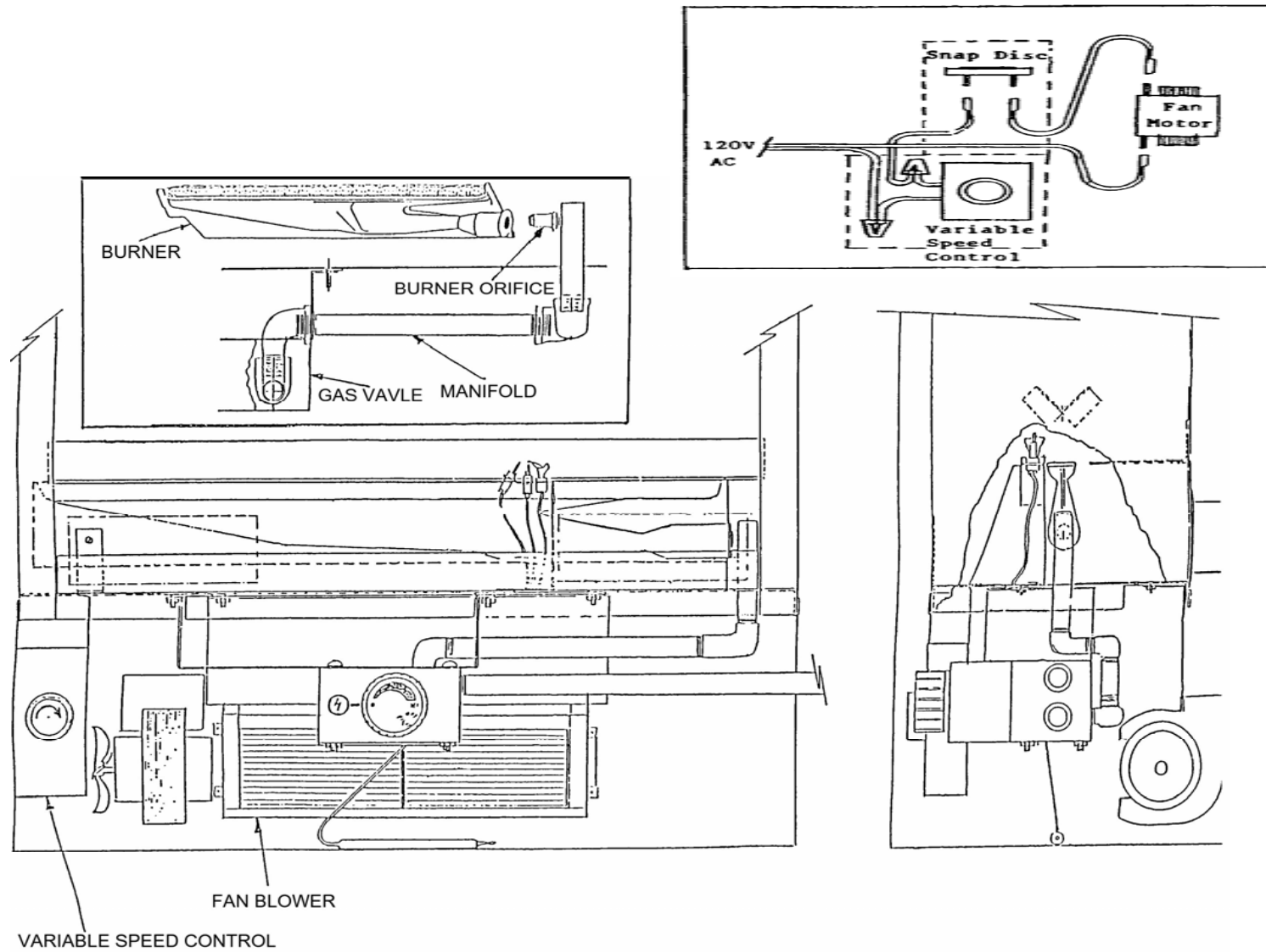
- | | |
|----------------------------------|-----------------------|
| 1. Fireflick remote control kit. | 3. Sidewall vent kit. |
| 2. Wall thermostat. | 4. Roof vent kit. |

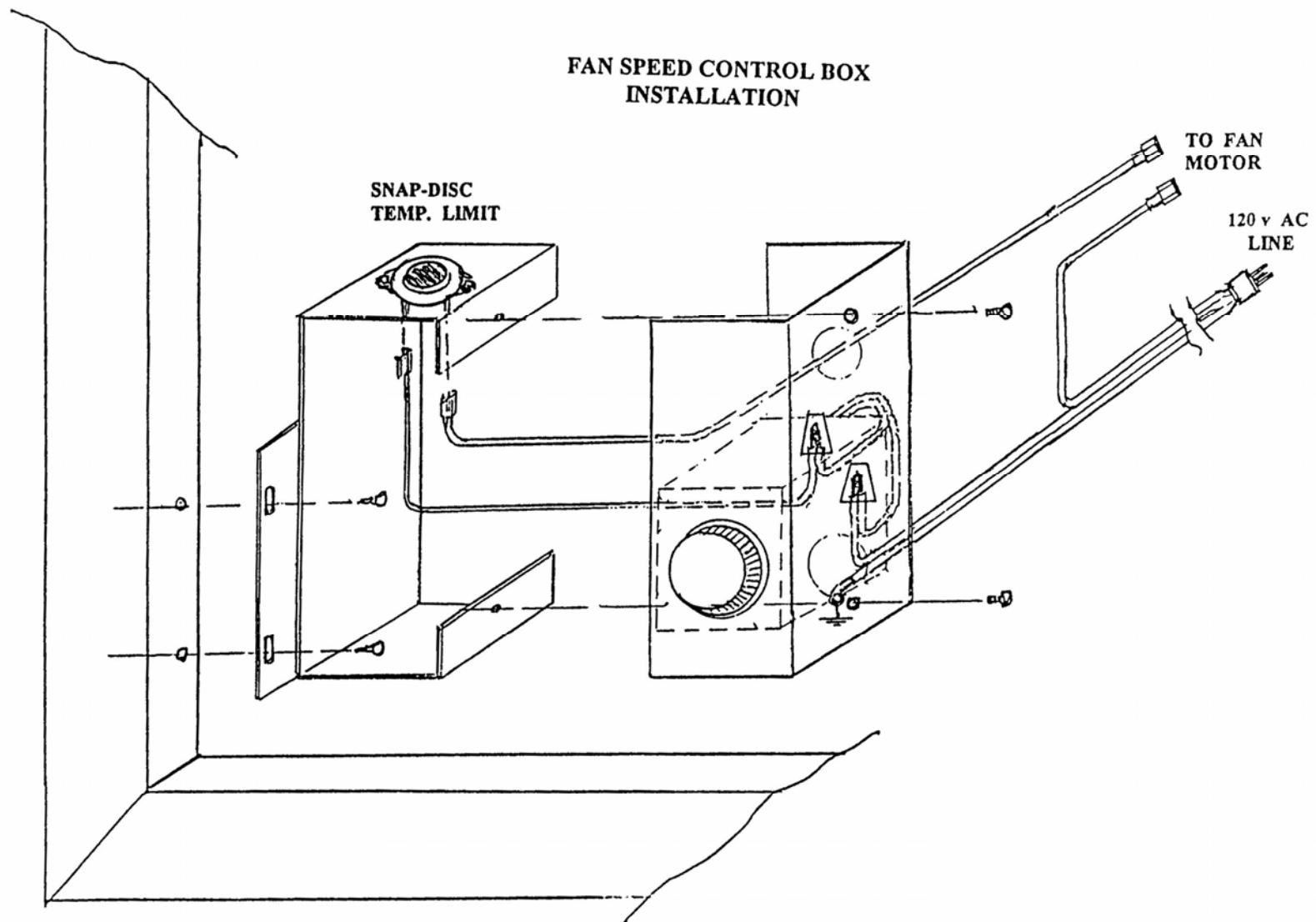
REPLACEMENT PARTS LIST

DVH-001-BURNER	002-VALVE
003-BLOWER ASSEMBLY	004-PILOT ASSEMBLY
005-PIEZO IGNITOR	006-THERMOCOUPLE
007-THERMO FAN CONTROL	008-ELECTRODE ASSEMBLY
009-OBSERVATION GLASS	010-SCREEN
011-DOOR KNOB & SCREW	012-DOOR ASSEMBLY
013-DOOR SPRING	014-VARIABLE SPEED FAN CONTRO

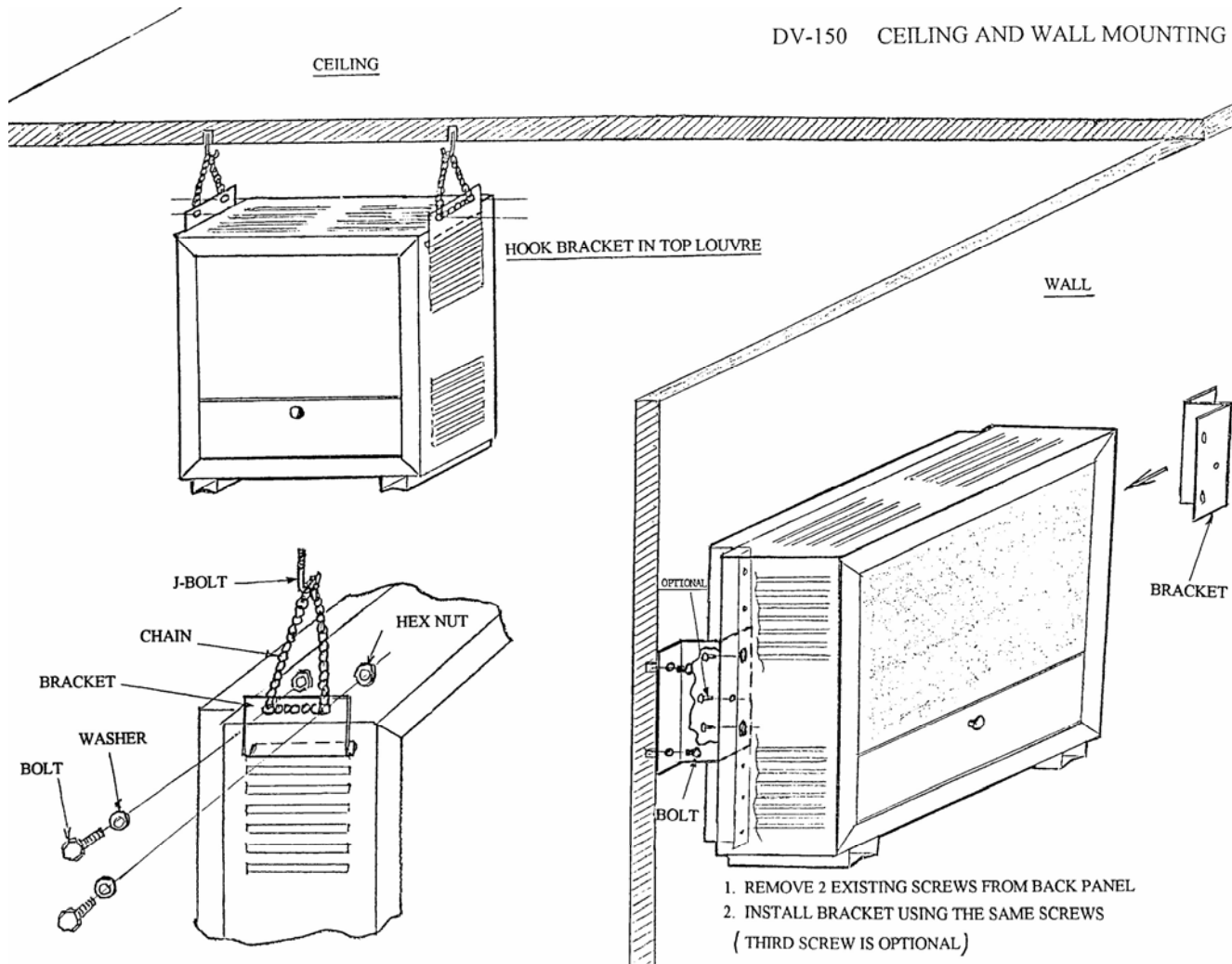
For repairs contact a licensed, recognized service agency, for spare parts contact your authorized REVERSO "SUPREME" Dealer

-





DV-150 CEILING AND WALL MOUNTING



LIGHTING INSTRUCTIONS (S.I.T. GAS CONTROL)

FOR YOUR SAFETY READ BEFORE OPERATING

WARNING: IF YOU DO NOT FOLLOW THESE INSTRUCTIONS EXACTLY, A FIRE OR EXPLOSION MAY RESULT CAUSING PROPERTY DAMAGE, PERSONAL INJURY OR LOSS OF LIFE.

A THIS FIREPLACE IS EQUIPPED WITH A PILOT WHICH MUST BE TURNED BY HAND WHILE FOLLOWING THESE INSTRUCTIONS EXACTLY.

B. BEFORE OPERATING SMELL ALL AROUND THE FIREPLACE AREA FOR GAS AND NEXT TO THE FLOOR BECAUSE SOME GAS IS HEAVIER THAN AIR AND WILL SETTLE ON THE FLOOR.

WHAT TO DO IF YOU SMELL GAS

- TURN OFF ALL GAS TO THE FIREPLACE.
- OPEN WINDOWS.
- DO NOT TRY TO LIGHT ANY APPLIANCE.
- DO NOT TOUCH ANY ELECTRIC SWITCH; DO NOT USE ANY PHONE IN YOUR BUILDING.
- IMMEDIATELY CALL YOUR GAS SUPPLIER FROM A NEIGHBOR'S PHONE. FOLLOW THE GAS SUPPLIER'S INSTRUCTIONS.
- IF YOU CANNOT REACH YOUR GAS SUPPLIER. CALL THE FIRE DEPARTMENT.

C. USE ONLY YOUR HAND TO TURN THE GAS CONTROL KNOB. NEVER USE TOOLS. IF THE KNOB WILL NOT PUSH IN OR TURN BY HAND. DO NOT TRY TO REPAIR IT. CALL A QUALIFIED SERVICE TECHNICIAN. FORCE OR ATTEMPTED REPAIR MAY RESULT IN A FIRE OR EXPLOSION.

D. DO NOT USE THIS FIREPLACE IF ANY PART HAS BEEN UNDER WATER. IMMEDIATELY CALL A SERVICE TECHNICIAN TO INSPECT THE FIREPLACE AND REPLACE ANY PART OF THE CONTROL SYSTEM AND ANY GAS CONTROL WHICH HAS BEEN UNDER WATER.

LIGHTING INSTRUCTIONS

WARNING: THE GAS VALVE HAS AN INTERLOCK DEVICE WHICH WILL NOT ALLOW THE PILOT BURNER TO BE LIT UNTIL THE THERMOCOUPLE HAS COOLED. ALLOW APPROXIMATELY 60 SECONDS FOR THERMOCOUPLE TO COOL.

1. STOP! READ THE ABOVE SAFETY INFORMATION ON THIS LABEL
2. TURN OFF ALL ELECTRIC POWER TO THE FIREPLACE.
3. TURN GAS KNOB CLOCKWISE TO OFF.
4. WAIT FIVE (5) MINUTES TO CLEAR OUT ANY GAS. IF YOU SMELL GAS INCLUDING NEAR THE FLOOR. STOP! FOLLOW "B" IN THE ABOVE SAFETY INFORMATION ON THIS LABEL IF YOU DON'T SMELL GAS GO TO NEXT STEP.
5. FIND PILOT LOCATED IN FRONT OF THE REAR LOG.
6. TURN GAS KNOB COUNTER- CLOCKWISE TO PILOT.
7. DEPRESS AND HOLD GAS KNOB WHILE LIGHTING THE PILOT WITH THE PUSH BUTTON IGNITOR. KEEP KNOB FULLY DEPRESSED FOR ONE MINUTE. THEN RELEASE. IF PILOT DOES NOT CONTINUE TO BURN REPEAT STEPS 3 THROUGH 6.
8. WITH PILOT LIT TURN GAS KNOB COUNTER- CLOCKWISE TO DESIRED TEMPERATURE SETTING.
9. TURN ON ALL ELECTRIC POWER TO THE FIREPLACE.

TO TURN OFF GAS

1. TURN OFF ALL ELECTRIC POWER TO THE FIREPLACE IF SERVICE IS TO BE PERFORMED.
2. PUSH IN GAS CONTROL KNOB SLIGHTLY AND TURN CLOCKWISE TO OFF. DO NOT FORCE.

FIVE YEAR LIMITED WARRANTY

Reverso Manufacturing Limited warrants to the original consumer/purchaser that the "Supreme" gas heater model DVH 150 N/P will be free from defects in materials and workmanship, under normal use and service, for a period of five (5) years from the date of purchase. This warranty is non – transferable and is made to the original retail purchaser only. These warranties shall be void and have no effect if the heater is not properly installed and/or operated in accordance with the installation/operation instructions manual provided with this product.

WARRANTY LIMITATIONS:

1. During the first year of the limited warranty Reverso Manufacturing Limited will provide replacement for parts found to be defective in workmanship (provided such parts have been subjected to normal conditions of use and service.) Such replacement parts shall be provided at no charge and REVERSO will also pay for reasonable labour costs for repair work. All such repairs must be approved by an authorized company official before any work commences. Labour costs to be borne by Reverso must not exceed the retail price of the part replaced.
2. During the second through fifth years of the limited warranty, Reverso Manufacturing Limited will provide replacement parts at no charge, except for those parts listed below. Reverso shall not be responsible for any labour, installation, construction, transportation, or other related costs.

The following parts are only guaranteed for the first year of the warranty: Burner Assembly, Valve, Controls, and Blower Assembly.

This warranty may not be extended by our representatives in any manner whatsoever. This warranty does not apply to components used in conjunction with the installation of this product.

The remedy for damages as the result of any defects in the product which have been warranted herein is limited to replacement parts and does not include any incidental damages or expenses sustained in connection with the product, including damages to property.

FOR U.S.A. ONLY

Some states do not allow limitations on how long an implied warranty lasts, so the above limitation may not apply to you.

THE REMEDY FOR DAMAGES AS THE RESULT OF ANY DEFECTS IN THE PRODUCT WHICH HAVE BEEN WARRANTED HEREIN IS LIMITED TO REPLACEMENT PARTS AND DOES NOT INCLUDE ANY INCIDENTAL DAMAGES OR EXPENSES SUSTAINED IN CONNECTION WITH THE PRODUCT, INCLUDING DAMAGES TO PROPERTY.

Some states do not allow the exclusion or limitation of incidental or consequential damages, so the above limitation or exclusion may not apply to you. This warranty gives you specific legal rights and you may also have other rights which vary from state to state.