



REVERSO-MANUFACTURING INC.

MANUFACTURERS OF
FIREPLACE EQUIPMENT AND ACCESSORIES

790 Rowntree Dairy Road, Woodbridge, Ontario, Canada L4L 5V3

Tel: (905) 851-6701 Fax: (905) 851-8376

Website: www.reversomfg.com Email: reverso@rogers.com

REVERSO

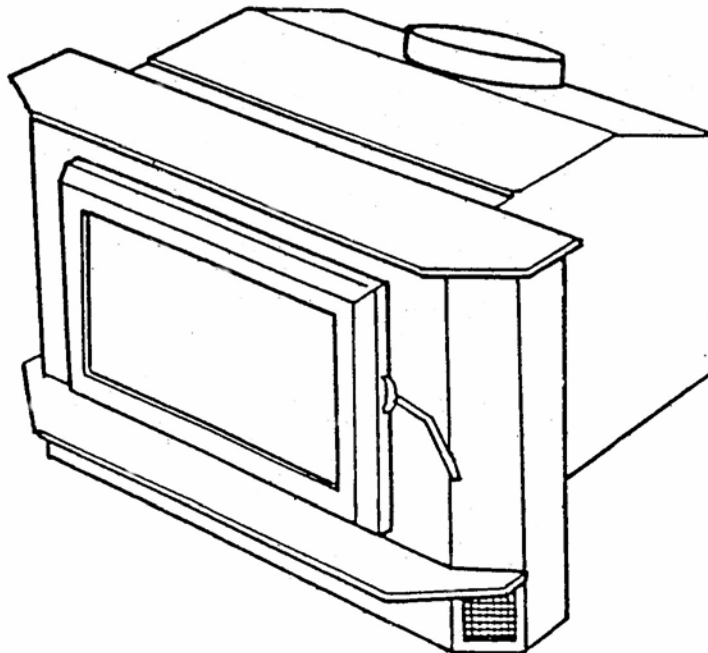
AUTOMATIC WOODBURNING FIREPLACE INSERT

MODEL "REVERSO" MMXI

OPERATION AND INSTRUCTION MANUAL

SAVE THESE INSTRUCTIONS

NOTE: READ CAREFULLY BEFORE ATTEMPTING INSTALLATION



MADE IN CANADA

Rev. September 2005

IMPORTANT

SAVE THESE INSTRUCTIONS. This booklet contains important information. It should be stored in a readily accessible place so it may be used for reference.

INTRODUCTION

The "Reverso" Fireplace Insert is a quality product wholly made in Canada. Fine workmanship and materials have been incorporated into the construction of this insert. The engineering staff at "Reverso" have designed the Wood burning Insert with durability, good performance, efficiency, and safety. Safe operation and installation are outlined in this manual.

READ THESE INSTRUCTIONS BEFORE INSTALLING YOUR INSERT.

Checklist for Fireplace Insert Installation

1. Read all instructions before installing and using your fireplace insert. Install and use only in accordance with manufacturer's installation and operating instructions.
2. Check your local building codes - Building Inspection Department. You may require a permit before installing your insert. Be aware that local codes and regulation may override some items in this manual.

WARNING: Careless installation is the major cause of **safety hazard**. Check all local building and safety codes before installation of unit.

3. Notify your home insurance company that you plan to install a fireplace insert.
4. Before installing, check and clean your chimney system thoroughly. If in doubt about its condition, seek professional advice. Your Reverso. insert is designed for installation into a masonry fireplace that is constructed in accordance with the requirements of The Standard for Chimneys, Fireplaces;. Vents, and Solid Fuel Burning Appliance, N.F.P.A. 211, or the applicable local code- requirements. As well, the Reverso Insert may be installed into a pre-fabricated "0" clearance Factory Built Fireplace, provided it will allow the insert to fit its firebox.
5. Your fireplace opening requires the following minimum sizes (Fig. 1).
6. Three face plates are available to seal the fireplace opening to cover a maximum of 38" width by 27" height (Fig. 2).

Other sizes are available on special order.

HIGHT 23"
 WIDTH 24"
 DEPTH 18"

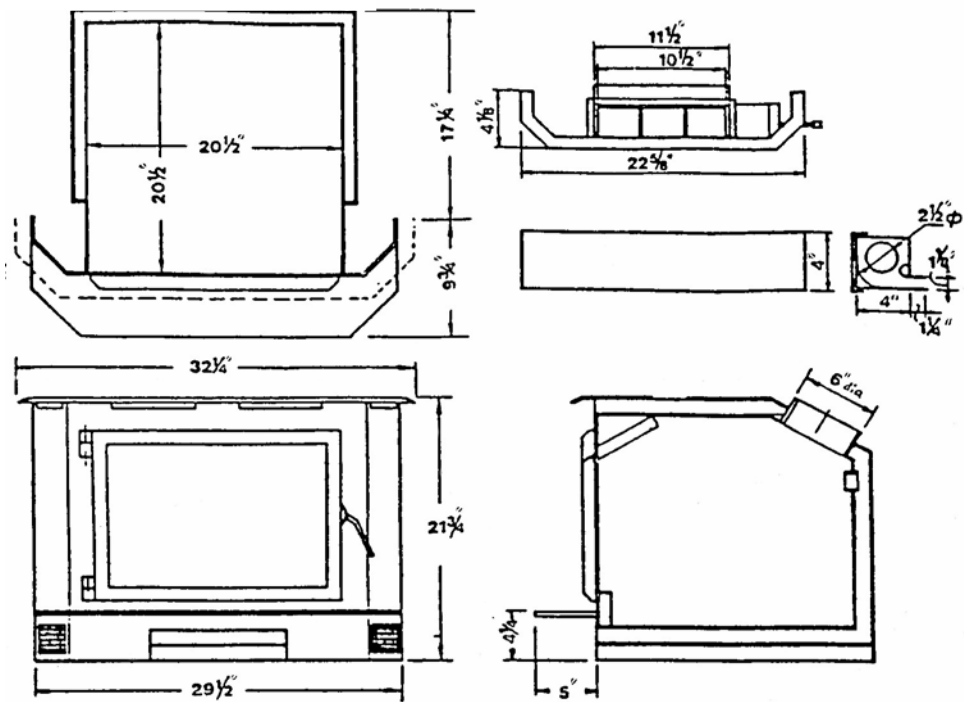


Fig. 1

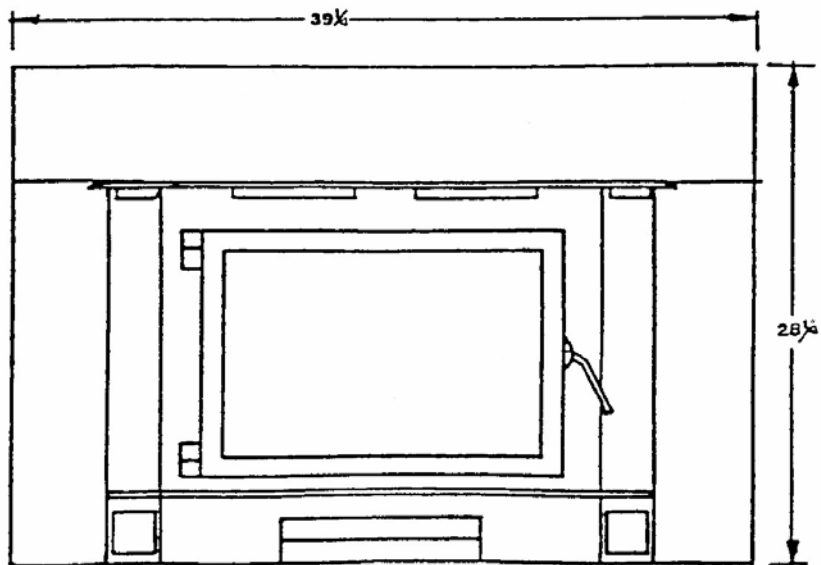


Fig. 2

7. Masonry Clearances: The minimum required clearances to combustible materials when installed into a masonry fireplace are (Fig. 3).

A. Adjacent Sidewall	18" to side
B. Combustible Mantle	14" to top
C. Top Facing	14" to top
D. Side Facing	6" to side
E. Hearth Extension Depth	16" to body face
* F. Hearth Extension Elevation	2" above floor level

* If the Hearth Extension Elevation is flush with floor level, dimension E (Hearth Extension Depth) must be increased to 19.5".

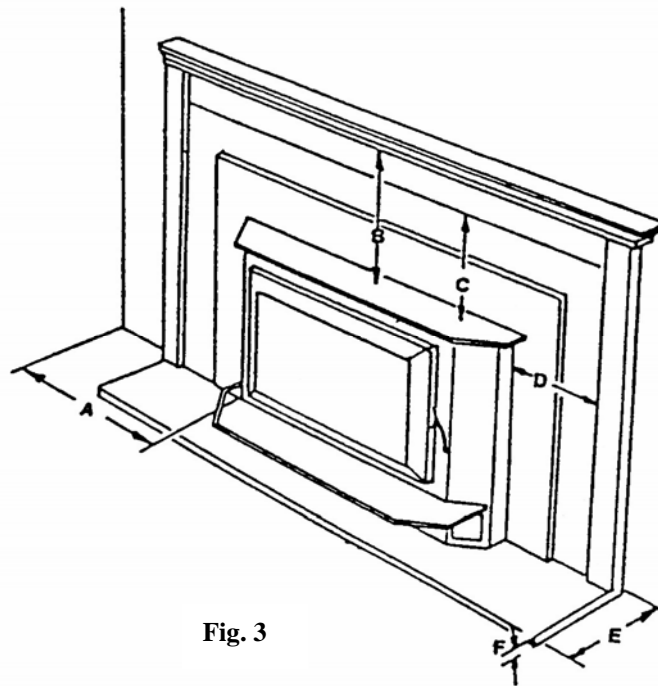


Fig. 3

8. The existing fireplace damper should either be removed or secured in the open position.

9. Inspect your fireplace and chimney prior to installation of your insert to determine that it is free from cracks, loose mortar or other signs of damage. If repairs are required, they should be completed prior to installing your insert. Do not remove bricks or mortar from your masonry fireplace.

10. Do not connect the insert to a chimney system servicing another appliance or an air distribution duct.

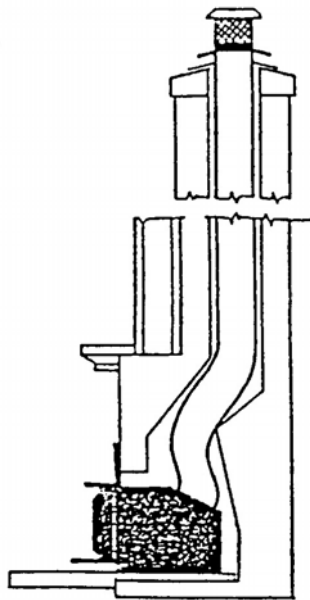
INSTALLING YOUR INSERT INTO A MASONRY FIREPLACE

Your insert is very heavy and will require two or three people to move it into position.. Removing the door by opening it and lifting it off its hinges will help make the insert a little lighter. Be sure to protect your hearth extension with a heavy blanket or carpet scrap during the installation.

The insert must be installed as per the requirements of your local inspection authority. The following method of flue connection is acceptable in most areas, it includes:

1. Use of full flue liner, where a stainless steel rigid or flexible liner pipe is routed from the insert outlet collar to the top of the chimney (Fig. 4).

Fig.4



2. If the floor of your fireplace is below the level of the fireplace opening, adjust the inserts to accommodate differences by shimming with non combustible masonry or steel shims.

3. Measure approximately the alignment of the flue liner with the position of the smoke outlet hole on the insert to check for possible offset. If an offset is required, use a proper stainless steel unit available with the chimney liner.

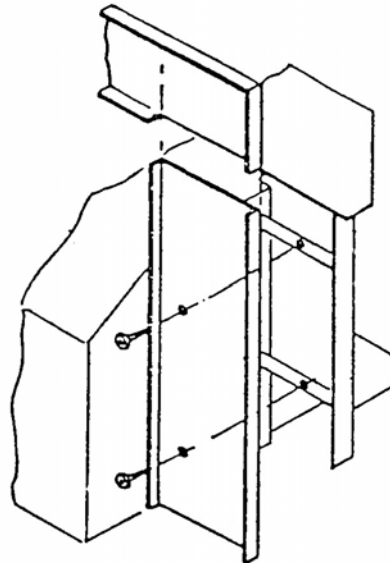
4. Once the above items have been checked, slide your insert into position after first positioning the flue liner and offset if required. (re-install raincap at completion of installation)

PANEL PLATES INSTALLATION

Prior to sliding your insert into its final position and attaching the connector or liner pipe, the face plate side panel plates must be installed as follows:

1. Screw the side face plate panels on to each side (Fig. 5).

Fig. 5



2. Using the top panel as a gauge, check that the side panels are within approximately 1/4" of the overall width. Now that your insert is installed, check once more that all the clearances from the unit to any combustible materials are correct as listed earlier.

FAN INSTALLATION

The fan should only be installed once the unit is in place in order to prevent damage to the fan. To attach your fan, align the fan supports with the offset clips attached to the under side of ash lip and slide into place. The tension holding your fan in place may be adjusted by either increasing or decreasing the offset spacing on the ash lip clips.

The fan is activated by the control switch which has three settings: Automatic, Medium and High.

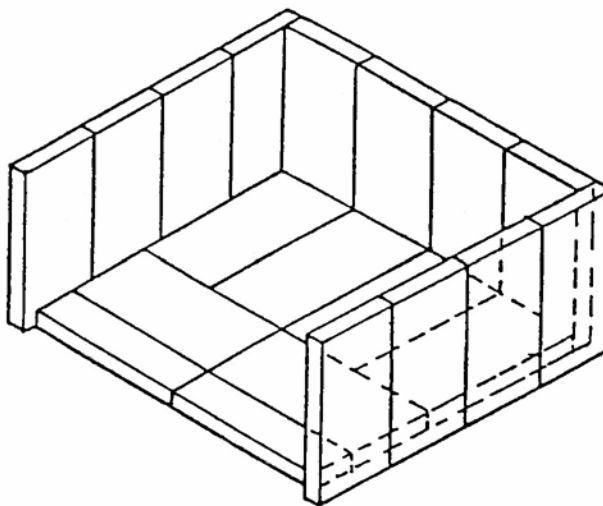
The automatic setting will activate the medium speed of the fan once the temperature in the vicinity of the thermostat has reached approximately 80C. The fan will shut off once the fire has gone out and the unit has cooled.

The manual settings, medium and high, by-pass the automatic operation of the fan and must not be used until a fire has been burning for at least 30 minutes. As well the fan must not be shut off until 30 minutes have elapsed after the fire has gone out.

FIREBRICK ASSEMBLY

Firebrick is included to extend the life of your insert and radiate heat more evenly. Check to see that all firebricks are in their correct positions and have not become misaligned during shipping (Fig. 6).

Fig. 6



FLOOR PROTECTION

Please check to ensure that your floor protection and hearth will meet the standards for clearance to combustibles. Your hearth extension must be made of non-combustible material.

COMBUSTIBLE CHAMBERS

The Reverso Insert has a dual combustable chamber system located in the upper area of the firebox. It is removable to ease the cleaning of your chimney system, as well as for replacement purposes if extensive warpage takes place. Minor metal warpage is acceptable and should be ignored. Overfiring of your insert may cause the chambers to warp excessively; in this case they must be replaced. Excessive warpage means the chambers will not stay in place or obstruct the smoke from leaving the firebox. Please note as well that the chambers may be dislodged if too much fuel is forced into the firebox. The chambers can shift during transit so ensure that they are correctly installed prior to your first fire (Fig 7).

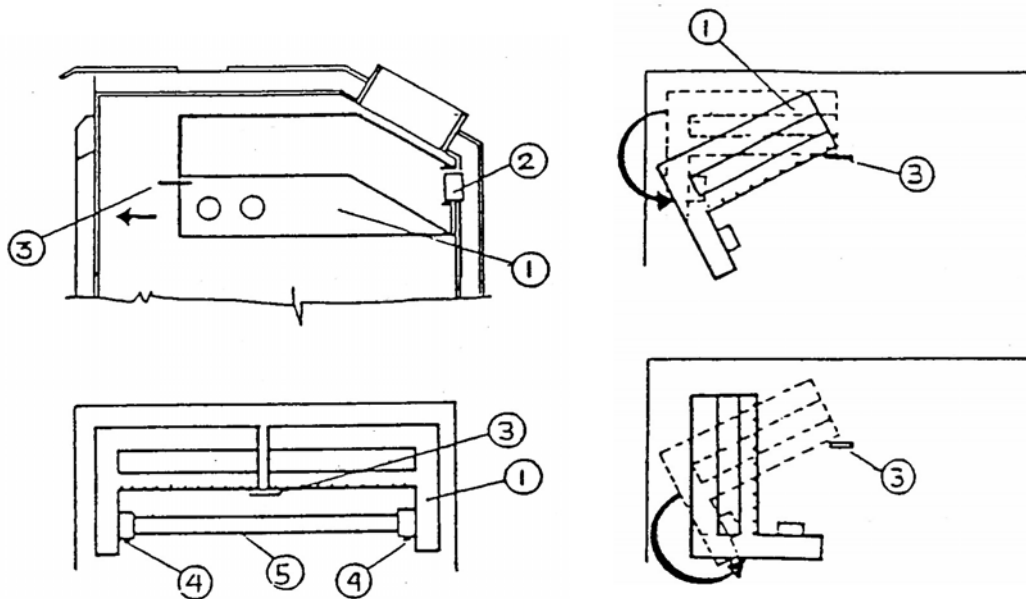


Fig. 7

- | | |
|------------------------|--------------------|
| 1. Combustible Chamber | 2. Air Intake Slot |
| 3. Front support | 3. Tube Support |
| 5. Secondary Air Tube | |

MAINTENANCE AND OPERATION

It is very important to carefully maintain your insert, including burning seasoned wood and maintaining a clean stove and chimney system. Have the chimney cleaned before the burning season and as necessary during the season, as creosote deposits may build up rapidly. Moving parts of your insert require no lubrication.

CREOSOTE

When wood is burned slowly, it produces tar and other organic vapors, which, when combined with moisture, form creosote. The creosote vapors condense in the relatively cool chimney flue of a slow-burning fire. As a result, creosote residue accumulates on the flue lining. When ignited, this creosote can make an extremely hot fire.

REMOVAL FOR CLEANING ETC.

Removal of your insert for cleaning purposes is usually not required if a proper installation has been done. In the event that removal is required, be sure not to damage any parts needed for re-installation. In most cases removal and replacement of the Combustible Chambers should allow full access for cleaning.

WARNING: Things to remember in case of chimney fire:

1. Close draft control.
2. Call the fire department.

WAYS TO PREVENT AND KEEP UNIT FREE OF CREOSOTE

1. Burn insert with draft control wide open for about 45 minutes every morning during burning season. This helps to keep creosote deposits within the heating system.
2. Burn insert with draft control wide open for about 10 to 15 minutes every time you apply fresh wood. This allows the wood to achieve the charcoal stage faster and burns up any wood vapors which might otherwise be deposited within the system.

ASH DISPOSAL

During constant use, ashes should be removed every few days. **DO NOT ALLOW ASHES TO BUILD UP TO THE LOADING DOORS.** Only remove ashes when the fire has died down. Even then, expect to find a few hot embers.

Always leave 1 to 2 inches of ash in the bottom of the firebox. This helps in easier starting and a more uniform burn of your fire.

Ashes should be placed in a metal container with a tight fitting lid. The closed container of ashes should be placed on a non-combustible floor or on the ground, well away from all combustible materials, pending final disposal. If the ashes are disposed of by burial in soil or otherwise locally dispersed, they should be retained in the closed container until all cinders have thoroughly cooled. Other waste should not be placed in the ash container.

MAINTENANCE OF GOLD PAINTED DOORS

The gold electroplated finish on the doors requires little maintenance, and need only be cleaned with a damp cloth. **DO NOT** use abrasive materials or chemical cleaners, as they may harm the finish and void the warranty.

DOOR GASKET

If the door gasket requires replacement, 5/8" diameter material must be used. A proper high temperature gasket adhesive is required.

GLASS CLEANING

Only clean your glass window when it is cool. Your local retailer can supply you with special glass cleaner if plain water and a soft cloth does not remove all deposits.

GLASS REPLACEMENT

In the event that you break your glass by impact, purchase your replacement from an authorized dealer only.

DRAFT CONTROL

The draft rod at the right hand side of the insert controls the intensity of the fire by increasing or decreasing the air allowed into the firebox. To increase your draft - pull open, and to decrease - push closed.

As well as a primary and glass wash air system, the unit has a full secondary draft system that allows air to the induction ports at the top of the firebox, just below the combustible chambers.

WARNING: To build a fire in ignorance or to disregard the information contained in this section can cause serious permanent damage to the unit and void your warranty.

FIRST FIRE

When your installation is completed and inspected, you are ready for your first fire.

1. Open control fully.
2. Open firebox door and build a small fire using paper and dry kindling. Secure door on the firebox and wait a few minutes for a good updraft in the flue to establish the fire (Leaving the door slightly open will help your fire start more rapidly).

CAUTION: Never leave unit unattended if door is left open. This procedure is for fire start-up only, as unit may over-heat if door is left open for too long.

3. With the draft still in the fully open position, add two or three seasoned logs to your fire. Form a trench in the ash bed to allow air to reach the rear of the firebox prior to closing the door.
4. After about 15 to 20 minutes, when your wood has begun to burn strongly, adjust you draft control down to keep the fire to a moderate level.

WARNING: Never build a roaring fire in a cold stove. Always warm your stove up slowly!

5. Once a bed of coals has been established, you may adjust the draft control to a low setting to operate the unit in its most efficient mode.
6. During the first few fires, keep the combustion rate at a moderate level and avoid a large fire. Only after 5 or 6 such fires can you operate the insert at its maximum setting, and only

after the metal has been warmed.

7. For the first few days, the insert will give off an odor from the paint. This is to be expected as high temperature paint becomes seasoned. Windows and/or doors should be left open to provide adequate ventilation while this temporary condition exists. Burning the insert at a very high temperature the first few times may damage the paint. Burn fires at a moderate level the first few days.

8. Do not place anything on the insert top during the curing process. This may result in damage to your paint finish.

9. During the first few days it may be more difficult to start the fire. As you dry out your fire brick and your masonry flue (if applicable), your draft will increase.

10. For those units installed at higher elevations or into sub-standard masonry fireplaces, drafting problems may occur. Consult an experienced dealer or mason on methods of increasing your draft.

11. Some cracking and popping noises may be experienced during the heating up process. These noises will be minimal when your unit reaches temperature.

12. Before opening your door to reload, open draft fully for approximately 10 to 15 seconds until fire has been re-established. This will minimize any smoking.

13. All fuel burning appliances consume oxygen during operation. It is important that you supply a source of fresh air to your unit while burning. A slightly opened window is sufficient for this purpose.

CAUTION: If the body of your unit or its flue baffle starts to glow, you are overfiring. Stop loading fuel immediately and close the draft control until the glow has completely subsided.

14. Green or wet wood is not recommended for your unit. If you must add wet or green fuel, open the draft control fully until all moisture has been dispersed by the intense fire. Once all moisture has been removed, the draft control may be adjusted to maintain the fire.

15. If you have been burning your insert on a low draft, use caution when opening the door. After opening the damper, open the door a crack, and allow the fire to adjust before fully opening the door.

16. The controls of your unit should not be altered to increase firing for any reason.

SOME SAFETY GUIDELINES

1. Never use gasoline, gasoline type lantern fuels, kerosene, charcoal lighter fuel, or similar liquids to start or freshen up a fire in your heater. Keep all such liquids well away from the heater while it is in use.

2. Keep the door closed during operation and maintain all seals in good condition.

-
3. Do not burn large quantities of paper in your insert.
 4. If you have smoke detectors, prevent smoke spillage as this may set off a false alarm.
 5. Do not overfire your insert. If the insert or its flue baffle begin to glow, you are overfiring. Stop adding fuel and close the draft control. Overfiring can cause extensive damage to your stove including warpage and premature steel corrosion. Overfiring will void your warranty.
 6. Do not permit creosote or soot buildup in the chimney system. Check and clean chimney at regular intervals.
 7. Your Reverso insert can be very hot. You may be seriously burned if you touch the insert while it is operating. Warn children of the burn hazard.
 8. The insert consumes air while operating, provide adequate ventilation with an air duct or open window while the insert is in use.
 9. Do not use grates, irons or other methods for supporting fuel. Burn directly on the bricks.
 10. Open the draft control fully for 10 to 15 seconds prior to slowly opening the door when refueling the fire.
 11. Do not connect your unit to any air distribution duct.
 12. Your insert should burn dry, standard firewood only. The use of "mill ends" is discouraged as this fuel can easily overheat your insert. Evidence of excessive overheating will void your warranty. As well, a large portion of saw mill waste is chemically treated lumber, which is illegal to burn in many areas. Salty drift wood and chemically treated fire logs also must not be burned in your insert.