

The **BUILDERS CHOICE** Model **DVP 1000**

DIRECT VENT

**FREESTANDING
OR BUILT-IN
FIREPLACE IN
AN ATTRACTIVE
MODERN
STYLING**



*Introducing:
the perfect
solution to a
direct vent
gas fireplace
a 2 part system for
2 stage installation*



REVERSO MANUFACTURING LTD

REVERSO BUILDERS CHOICE

DIRECT VENT GAS FIREPLACE

Termination kit and venting system have been tested & designed for high rise condominiums

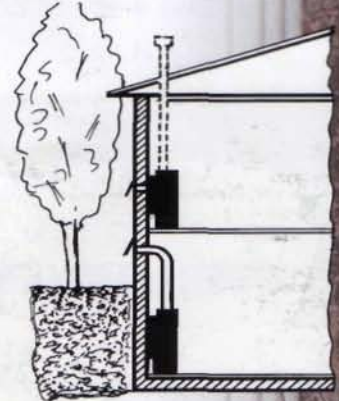
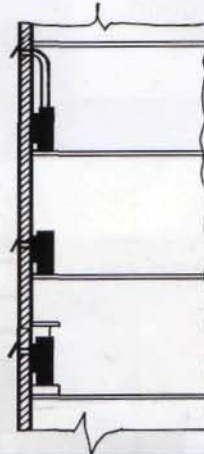
STANDARD FEATURES

- Natural Gas or Propane. Push Button Ignition.
- High efficiency Burner.
- Fast Acting Pilot Safety Shut-off.
- Combination Ceramic Fiber / Cast Natural Look Split Logs.
- High Temperature Glass Door - Shock Resistant.
- Sealed Combustion 4" - 6" Coaxial Vent System.
- Glowing Logs. Realistic Flame.
- Compact Design. Air Tight Construction.
- Venting Versatility (Rear and Top Vent same Vent).
- Adjustable Flame Height.
- Easy Access, Hinged Door (No Tools Required).

OPTIONAL FEATURES

- Sidewall Vent Kit (Flush or Surface).
- Rooftop Vent Kit.
- Recessed Zero Clearance Kit.
- Remote Control.
- Wall Thermostat - Manual Flame Control.
- Automatic Self Modulating Gas Control.
- 125 CFM Variable Speed Circulation Fan.
- Vent Riser Kit (For Below Grade Installations).
- Polished or Brushed Louvers
- Gold Plated Door Assembly.
- Bay Door Gold or Black.
- Arch Door Gold or Black.

Can be installed anywhere, top or rear vent.



SPECIFICATION

	Natural Gas	Propane
Max. BTUH input	15,000	15,000
Min. BTUH input	12,500	12,500
Annual Fuel Utilization Eff.	up to 67%	
Efficiency (fan on)	up to 82%	

Clearances To Combustibles

Recessed: Top:0" Sides: 0" Rear: 0" Floor: 0"
Optional zero clearance kit must be installed

Non Recessed: Top:2" Sides:2" Rear: 0" Floor: 0"

All specifications are subject to change without notice, due to ongoing product improvements.



REVERSO
MANUFACTURING LTD

790 ROWNTREE DAIRY ROAD,
WOODBIDGE, ONTARIO, CANADA L4L 5V3
TEL.: (905) 851-6701 FAX: (905) 851-8376

AUTHORIZED DEALER